



NewLife[®]
Medicals Pvt. Ltd.

your trusted life line !

**NUTRACEUTICAL
PRODUCTS**

JOINT CARE



- Glucosamine
- Glucosamine + Ashwagandha Extract
- Glucosamine + Ginkgo Biloba Extract
- Glucosamine + Collagen Peptide
- Glucosamine + Methyl Sulphonyl Methane + Minerals
- Glucosamine + Curcumin Powder + Boswellia Extract
- Glucosamine + Chondroitin + Vitamins
- Glucosamine + Chondroitin + Hyaluronic Acid
- Glucosamine + Collagen + Vitamins + Minerals
- Glucosamine + Chondroitin + Methyl Sulphonyl Methane
- Glucosamine + Methyl Sulphonyl Methane + Minerals
- Glucosamine + Chondroitin + Vitamins + Minerals
- Glucosamine + Chondroitin + Methyl Sulphonyl Methane + Hyaluronic Acid

BONE HEALTH



- Coral Calcium + Vitamin D
- Coral Calcium + Vitamin D + Vitamin B12
- Coral Calcium + Vitamin D + Magnesium + Zinc
- Calcium + Vitamin K2 7
- Calcium + Calcitriol + Zinc
- Calcium + Soy Isoflavone + Vitamin D
- Glucosamine + Chondroitin + Calcium
- Calcium + Magnesium + L-Lysine + Vitamin D
- Calcium + Magnesium + Boron + Selenium + Copper + Vitamin D

IMMUNITY BOOSTERS



- Multiple Strains of Prebiotic + Probiotic
- Ashwagandha Extract + Shilajit + Beta Carotene + Vitamins
- L-Carnitine + Vitamins + Minerals
- Minerals + Folate + Vitamin C + Zinc + Selenium
- Lycopene + L-Lysine + L-Carnitine + Vitamin C + Vitamin E + Copper + Zinc

RESPIRATORY HEALTH



- Citrus Bioflavonoid + Quercetin + Vitamin C + Vitamin D + Iron
- Hesperidin + Ellagic Acid + Elderberry Extract + GrapeSeed Extract + Zinc

HAEMATINIC



- Iron + Folic Acid + Vitamin B12 + Vitamin B6 + Zinc
- Folic Acid + Vitamin B12 + Vitamin C
- Folic Acid + Vitamin B12 + Vitamin C + Iron + Zinc
- Vitamin B1 + Vitamin B2 + Vitamin B6 + Vitamin B12

HEART HEALTH



- Ultra L-Carnitine + Alpha Lipoic Acid + Vitamins
- Omega 3 + Lycopene + Garlic Powder + Plant Sterols
- Co-Enzyme Q10 + L-Carnitine + Flaxseed Powder + Vitamin D + Folic Acid + Vitamin B12

PREGNANCY CARE



- Calcium + Magnesium + Vitamin D
- Vitamin B12 + Vitamin D + Zinc + Minerals
- Vitamin B12 + Folic Acid + Zinc + Selenium + Iodine + Iron
- Omega 3 DHA + Folic Acid + Vitamin D + Vitamin E + Vitamin K + Iodine
- Inositol + L-Arginine + Beta Carotene + Vitamin D + Folic Acid + Vitamin B6 + Vitamin B12 + Magnesium + Calcium

FEMALE FERTILITY



- N-Acetylcysteine + L Arginine + Para Aminobenzoic Acid + Vitamin E + Zinc + Chromium
- Inositol + Para Aminobenzoic Acid + Vitamin C + Folic Acid + Vitamin B12

MALE FERTILITY



- Co-Enzyme Q10 + L-Carnitine + Glutathione + Vitamin B12 + Minerals
- Ginseng Extract + L-Arginine + Lycopene + Vitamin C + Iron + Zinc

DIABETIC CARE



- Fenugreek Powder + Vitamin B3 + Vitamin D + Chromium + Selenium
- Cinnamon Extract + Bitter Gourd Extract + L-Carnitine + Vitamin D + Calcium Pantothenate + Chromium

ANTI-AGEING



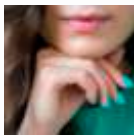
- L-Carnitine + Grapeseed Extract + Astaxanthin
- Cranberry Powder + Grapeseed Extract + Vitamin C + Vitamin E + Biotin
- Hyaluronic Acid + Biotin + Curcumin Powder + Pomegranate Extract + Vitamin A + Vitamin C
- Co-Enzyme Q10 + Hesperidin + Green Tea Extract + Vitamin A + Vitamin C + Vitamin E

BRAIN HEALTH



- Valerian Extract + Phosphatidylcholine + Sage Extract + L-Arginine + Manganese
- Alpha Lipoic Acid + Chamomile Extract + Phosphatidylserine + L-Glutathione + Co-Enzyme Q10
- Ginkgo Biloba Extract + N-Acetylcysteine + 5-Hydroxy Tryptophan + Beta-Carotene + Manganese

HAIR, SKIN & NAILS



- Grapeseed Extract + Biotin + Selenium + Zinc
- Marine Collagen + Keratin + Inositol + Blackcurrant Seed
- Collagen + Phytosterols + Biotin + Selenium + Copper + Vitamins
- Collagen + Lycopene + Grapeseed Extract + Green Tea Extract + Essential Vitamins + Minerals
- Methionine + Lutein + Citrus Bioflavonoid + Collagen +
- Cranberry Extract + Alpha Lipoic Acid + Vitamin E + Boron

VISION



- Zeaxanthin + Vitamin C + Vitamin A + Zinc
- Bilberry Extract + Lutein + Beta Carotene + Vitamin B1 + Vitamin C
- Citrus Bioflavonoid + Beta Carotene + Vitamin B3 + Vitamin A + Zinc

LIVER DETOX



- Milk Thistle + L-Glutathione + Dandelion Extract
- L-Carnitine + Inositol + Choline Bitartrate + Vitamin C
- Co-Enzyme Q10 + Milk Thistle + Astaxanthin + Calcium
- Pantothenate + Vitamin D + Selenium

ANTI-OXIDANTS



- Green Tea Extract + Grapeseed Extract + Vitamins
- Acai Berry Powder + Vitamin C + Vitamin E + Selenium
- Aloe Vera Extract + Betaine + L-Arginine + Vitamin C + Vitamin A + Vitamin E + Vitamin B3 + Zinc

VARICOSE VEINS



- Hesperidin + Grapeseed Extract + Vitamin C
- Citrus Bioflavonoid + Lycopene + Vitamin A + Vitamin C

KIDNEY HEALTH



- D-Mannose + Pomegranate Extract + L-Taurine + Vitamin D
- Cranberry Powder + N-Acetylcysteine + L-Carnitine + Vitamin C

MENOPAUSE







- Calcium + Soy Isoflavone + Vitamin D
- Sage Extract + Soy Isoflavone + Lignans + Magnesium + Zinc
- Para Aminobenzoic Acid + Green Tea Extract + Multi-Vitamins + Multi-Minerals

GERIATRIC CARE



- Ginseng Extract + Lecithin + Vitamins + Minerals
- Omega 3 + Pomegranate Extract + Vitamin C + Magnesium + Zinc
- Ginseng Extract + Vitamin B12 + Vitamin A + Vitamin C + Vitamin E + Selenium + Chromium
- L-Carnitine + Biotin + Choline + Citrus Bioflavonoids + Multi-Vitamins + Minerals

| | Indication | Composition | Dosage Form | Our USP |
|--------------------------------------|--|--|--|---|
| Gut Health | Constipation, IBS-c, NASH, MHE, Celiac disease | <i>Bifidobacterium longum</i> W11 + Fructo-oligosaccharides | Sachet | The clinically studied synbiotic formula with strain specific rifaximin resistant probiotic |
| | Acute Diarrhea, Antibiotic Associated Diarrhea | <i>Lactobacillus rhamnosus</i> GG (Microbac™ GG)  | Capsule/ Sachet/ Stick | Most researched bacterial probiotic with Dual (Microbac and Oromelt™) technology offering rapid orodispersion and 5 times higher probiotic activity |
| | Necrotizing Enterocolitis, Colic Pain, Late Onset Sepsis | <i>Lactobacillus rhamnosus</i> GG (Microbac™ GG) | Oral Drops | The safest and most effective formula for neonates and infants |
| | Acute Diarrhea, Antibiotic Associated Diarrhea | <i>Saccharomyces boulardii</i>  | Sachet | World's most researched yeast probiotic with Dual (Fluidized Bed Dried and Oromelt) technologies offering accurate drying and rapid oro-dispersion |
| | IBS, IBD, Abdominal Pain | <i>Lactobacillus rhamnosus</i> GG (Microbac™ GG) + <i>Saccharomyces boulardii</i>  | Sachet/Capsule | The combination of most researched probiotics with advanced triple technologies (Microbac™, FBD and OroMelt™) for gut health |
| | Acute Diarrhea | <i>Saccharomyces boulardii</i> + Electrolytes | Sachet | Most documented yeast probiotic with electrolytes for GI flora restoration and hydration improvement |
| | Adult Diarrhoea, IBS, IBD | <i>Lactobacillus rhamnosus</i> GG (Microbac™ GG) + <i>B longum</i> + <i>L acidophilus</i> + <i>S thermophilus</i> + FOS | Capsule | A synbiotic formula of probiotic with different genus for gut health |
| Allergy | Allergic Rhinitis, Atopic Dermatitis | <i>Lactobacillus paracasei</i> GMNL-133 + <i>Lactobacillus fermentum</i> GM-090  | Capsule/Sachet Stick/Dry powder syrup | Strain Specific Probiotic Approach for Allergic Disorder Management with Th1/Th2 imbalance |
| Women's Health | Vaginal infections | <i>Lactobacillus crispatus</i> + <i>Lactobacillus jensenii</i> + <i>Lactobacillus rhamnosus</i> + <i>Lactobacillus gasseri</i> + FOS | Capsule | Vaginal microbiome specific formula for vaginal health |
| | PCOS Infertility | D-chiro inositol + Myo inositol | Tablet | A rational, clinically proven approach for PCOS management |
| | | D-chiro inositol + Myo inositol + N-Acetylcysteine + Zinc + L-Methylfolate calcium hydrate + Chromium + Selenium + Vit D3 + Vit B12 | Tablet | A rational, clinically proven formula to manage infertility associated with PCOS |
| | Perimenopause & Menopause Management | <i>Rhapontic rhubarb</i> extract | Tablet | Comprehensive formula for the management of perimenopause and postmenopause |
| PMS and Menstrual Cycle irregularity | <i>Vitex Agnus Castus</i> extract + Vit B6+ Magnesium | Tablet | Comprehensive solution for management of PMS, Menstrual cycle irregularity & mastalgia | |
| Male Health | Male Infertility | Tradafert® (<i>Tribulus terrestris</i> + <i>Alga Ecklonia bicyclis</i> + Chitosan Oligosaccharide + Myo inositol) | Tablet | Clinically studied fixed dose combination that works beyond antioxidants for the treatment of male infertility |
| Immunity | Viral Respiratory infections | Eleulide™ (extract of <i>Andrographis paniculata</i> & <i>Acanthopanax senticosus</i>) + EchinActive™ (<i>Echinacea purpurea</i> extract) + Yeast Beta Glucan + Vit C + Zinc | Capsule | Antiviral Immunostimulator for the Management of Viral Upper Respiratory Tract Infections |
| Oral Care | Sore throat | EchinActive™ (<i>Echinacea purpurea</i> extract) + <i>Curcuma longa</i> extract (non staining) + Sodium chloride + Sodium bicarbonate | Stick (gargle powder) | Ready to use and highly effective gargling formula for sore throat |
| Liver | NAFLD, NASH, Viral/Alcoholic Hepatitis, Fibrosis | Phosphocomplex® Silybin + Vit E | Capsule | Liver health management through most bioavailable Silybin |

Therapy Focused Solutions

| | Indication | Composition | Dosage Form | Our USP |
|------------------|--|--|--|---|
| Pain | Chronic low back pain | Boscurin [®] | Tablet | The most Potent Inflammalgic Triad Inhibitor to control pain and inflammation |
| | Osteoarthritis Joint Pain | Native (Undenatured) Collagen type II | Capsule | A unique approach of OA management through cartilage protection by Oral tolerization |
| | | Native (Undenatured) Collagen type II + <i>Rosehip</i> extract | Capsule | A synergistic approach to protect cartilage and ease joint pain |
| | | Native (Undenatured) Collagen type II + <i>Rosehip</i> extract + Collagen Hydrolysate | Sachet | A multimodal formula to prevent cartilage degradation and support cartilage anabolism |
| | | Native (Undenatured) Collagen type II + <i>Boswellia serrata</i> extract | Capsule | Osteoarthritis management through immuno-mechanical pathway induced cartilage degradation control |
| | | Native (Undenatured) Collagen type II + <i>Boswellia serrata</i> extract + <i>Mobilee</i> [®] (Rooster comb extract) | Capsule | A multimodal approach of cartilage protection and synovial health improvement |
| | | Native (Undenatured) Collagen type II + <i>Boswellia serrata</i> extract + <i>Mobilee</i> [®] (Rooster comb extract) + <i>Curcuma longa</i> extract | Capsule | A wholesome OA management formula for whole joint disease |
| | | <i>Boswellia serrata</i> extract + <i>Mobilee</i> [®] (Rooster comb extract) | Capsule | A targeted formula for mobility improvement by managing synovial inflammation, synovial effusion and cartilage protection |
| | | <i>Boswellia serrata</i> extract + <i>Devil's Claw</i> extract + <i>Rosehip</i> extract | Capsule | A complementary OA management approach to control cartilage degradation and pain |
| | | <i>Rosehip</i> extract + <i>Curcuma longa</i> extract + <i>Cucumber</i> extract | Capsule | A synergistic approach of OA management to protect cartilage with pain control |
| Neuropathic Pain | Palmitoylethanolamide + Uridine + Vit B12 + Folic Acid | Capsule | Comprehensive neuropathic pain management approach through pain control with neuronal regeneration | |
| Tendon | Tendinopathy | <i>Boswellia serrata</i> extract + Mucopolysaccharides + Collagen type I + Vit C | Capsule | Ultrasound sonographically proven formula catering to tendon repair, inflammation and pain |
| Bone | Fracture Healing and Osteoporosis | Ogenic [™] Elements + Calcium citrate maleate | Tablet | A synergistic composition accelerating bone fracture healing and controlling osteoporosis |
| Muscle | Post surgical muscle health | Celements [®] (Conditionally Essential Amino Acids) + <i>Mobilee</i> [®] (Rooster comb extract) | Sachet | Muscle Health Restoration through Stimulating Muscle Anabolism and Controlling Muscle Catabolism |
| | Muscle Health | Celements [®] (Conditionally Essential Amino Acids) + Vitamin D3 | Stick | Muscle Health Restoration through Stimulating Muscle Anabolism |
| Mental Health | Stress | Lactium [®] (Milk protein hydrolysate with alpha-casozepine) | Capsule | Novel Bioactive Decapeptide for Stress Management |
| | Stress, Anxiety | Lactium [®] + L-theanine | Capsule | A Complementary Stress Management Approach by Novel Bioactive Decapeptides with Fast Acting L-Theanine |
| | Stress related Insomnia | Lactium [®] + Melatonin+ <i>Ashwagandha</i> extract | Capsule | Multimodal formula for sleep improvement with circadian rhythm restoration |
| | Insomnia, Stress, Anxiety | Lactium [®] + L-theanine + Melatonin | Capsule | Advanced, fast acting formula for controlling stress, anxiety and sleep disturbance |




Our Global Presence






Join us in the Journey

We are proud to announce that we have strong a network of suppliers inclusive of wholesalers, distributors and even manufacturers across the globe.

For strategic tie ups please contact:

-  **General Manager EMD** : jaydeep@newlifemedicals.com
- LatAm & South East Asia** : export@newlifemedicals.com
- Africa, Middle East & CIS** : exportbd@newlifemedicals.com

  **INDIA**
NewLife Medicals Pvt. Ltd.
1020 & 1021, 10th Floor, Maple Trade Centre, Nr. Surdhara Circle,
SAL Hospital - Satadhar Road, Thaltej, Ahmedabad-380054, India.

  **USA**
NewLife Medicals (USA), Inc
146 Donmoor CT, Garner, North Carolina 27529, USA

  **IRELAND**
NewLife Biopharma Limited
Dublin, Ireland

Please visit us for more details :
www.newlifemedicals.com



NewLife[®]
Medicals Pvt. Ltd.
your trusted life line !